

EXspect 231 NIR absorption sensor in compact design



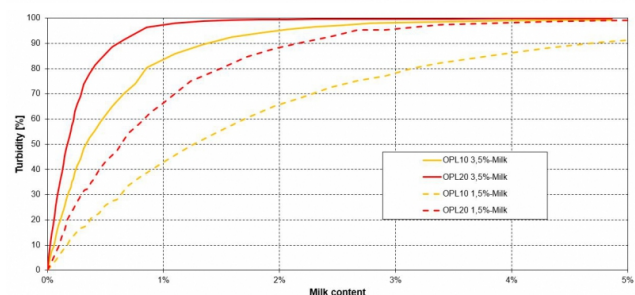
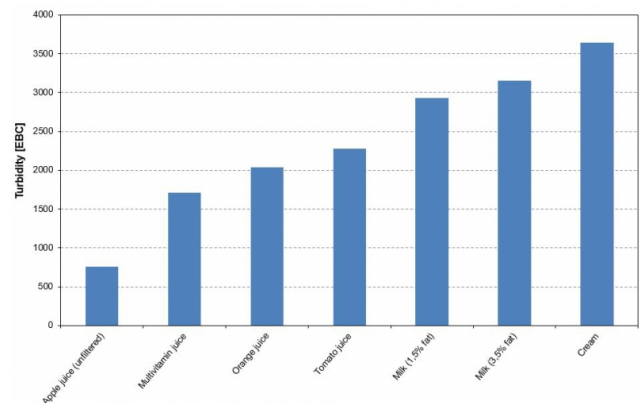
- » Compact design with integrated amplifier
- » %-Absorption / EBC / FAU / mg/l / AU / OD or customer defined unit
- » Durable sapphire window
- » Hygienic Design, CIP/SIP-capable
- » LED light source guarantees a durable and stable signal
- » Easy parameterization via display or software EXpert
- » Versions according EHEDG / 3-A available

EXspect 231 is a high-precision NIR compact sensor for monitoring production processes in the food and pharmaceutical industries as well as in many other areas of process application, which can be optimally adapted to the respective measuring task

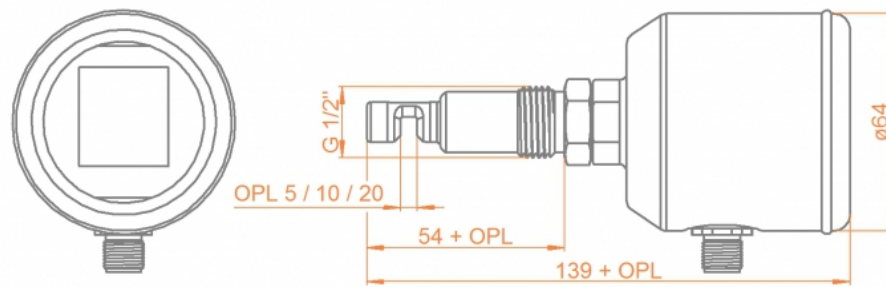
Specifications

Measuring range max.:	0-100 % / 0...6 AU / 0...6600 EBC
Resolution:	0,1 % or 0,01 AU
Accuracy:	± 1 % from measurement value
Reproducibility:	≤ 1 % from final value
Wavelength:	850 nm
Light source:	LED
Optical path length:	5, 10 or 20 mm
Material:	Stainless steel 1.4435 (316L)
Surface:	Ra <0,37 µm
Window:	Sapphire
Supply voltage:	24 V DC
Contact:	NO or NC configurable 150 mA
Input contact:	zeroing
Process connection:	Thread G1/2"
Process temperature:	-10... 90 °C, 135 °C max. 1 hour (SIP cycle)
Process pressure:	max. 16 bar (232 psi)
Electrical connection:	M12 connector 5-pin or 8-pin (digital parameterizable)
Interfaces:	4 ... 20 mA
Parameterization:	Software EXpert
Protection class:	IP69

Typical Measurements



EXspect 231 NIR absorption sensor in compact design



Order code

Code	Measuring range	Delivery time
A	0...100 % Absorption	3 Weeks
B	0...3,5 AU / 0...3850 EBC / 0...7 OD	3 Weeks
C	0...6 AU / 0...6600 EBC / 0...12 OD	3 Weeks

Code	Optical path length	Delivery time
05	5 mm	3 Weeks
10	10 mm	3 Weeks
20	20 mm	3 Weeks

Code	Material (wetted parts)	Delivery time
4435	Stainless steel 1.4435 / 316L	3 Weeks

Code	Sealing material (wetted sealings)	Delivery time
MET	Metal sealing (without elastomer)	3 Weeks

Code	Process connection	Delivery time
G12	Thread G1/2" (metallic sealing)	3 Weeks
VRN	Varivent N DN40-125 (EHEDG/3A)	3 Weeks
T15	Tri-Clamp 1,5" (EHEDG/3A)	3 Weeks
T20	Tri-Clamp 2" (EHEDG/3A)	3 Weeks

Code	Interface	Delivery time
AS	Analogue 4...20 mA / M12 5-pin	3 Weeks
AD	Analogue 4...20 mA / digitally parameterisable / M12 8-pin	3 Weeks

Code	Display	Delivery time
1	With integrated display	3 Weeks

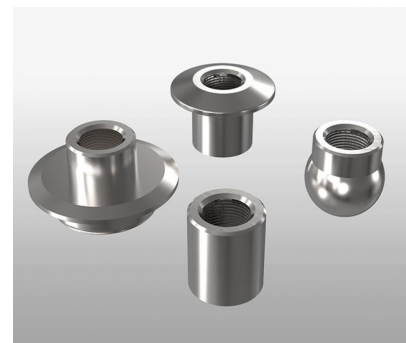
Accessories



EXcap 110 Set of optical reference filters



Optical reference filter for checking absorption



Weld-in socket and process adapters