

FS-925E 0.4 - 6.0 (l/min) with pre-adjusted set points  
FS-926E 0.05 - 0.3 (l/min) with pre-adjusted set points

FLOW  
SWITCHES

SHUTTLE TYPE

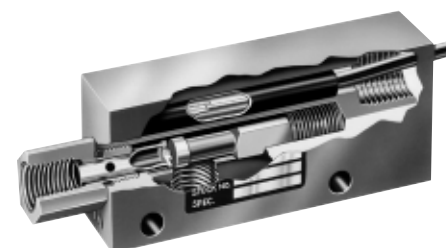
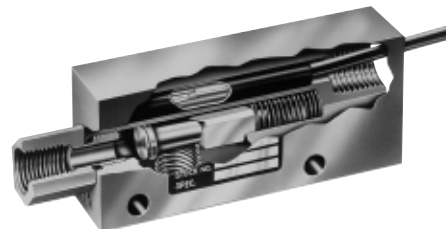
These two series of precision-calibrated switches provides reliable and consistent performance; repeatability is within 1%. FS-925E and FS-926E units are factory preset for actuation at specified flow rates.

These switches provide accurate detection of excessive or insufficient flow rates in such applications as: protecting against loss of fluid flow in hydraulic systems, assuring proper coolant flow in semiconductor processing equipment, monitoring high pressure lubrication systems, and ensuring proper air flow in water/waste systems.

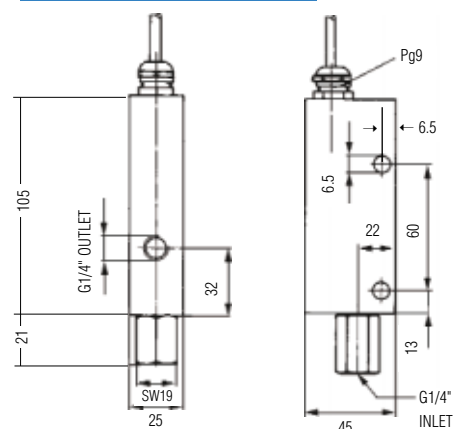
## Specifications

(all data related to water at +20°C)

	FS-925E	FS-926E
<b>Max. flow</b>	12 l/min	3 l/min
<b>Max. operating pressure</b>	68 bar	68 bar
<b>Proof pressure</b>	100 bar	100 bar
<b>Temperature range</b>	- with Polysulfone piston (standard), with cable, with plug connector: -20 °C...+80 °C - with metal piston and terminal box: -20 °C...+150 °C	
<b>Set points (l/min)</b>	0.4; 1.0; 2.0; 3.0; 4.0; 6.0	0.05, 0.1, 0.15; 0.1; 0.25; 0.3
<b>Switching function (related to increasing flow)</b>	NC, NO, SPDT	NC, NO, SPDT
<b>Mounting orientation</b>	any position	any position
<b>Factory calibration position with set point adjustment</b>	vertical, inlet port down, electrical connection up	
<b>Repeatability</b>	± 1%	± 1%
<b>Adjustment accuracy</b>	±10%	±10%
<b>Hysteresis</b>	max. 15%	max. 20%
<b>Mounting</b>	G 1/4"	G 1/4"
<b>Electrical connections</b>	- cable: PVC, 2 or 3 x 0.34 mm <sup>2</sup> (length: approx. 1 m) - plug connector per DIN 43650 - terminal box	
<b>Enclosure</b>	- IP 65	IP 65
<b>Electrical data contact rating</b>	- SPST (NC/NO): max. 100 VA, 3 A, 220 V~ - SPDT: max. 20 VA, 0.5 A, 250 V~	
<b>Weight</b>	0.5 kg	0.5 kg

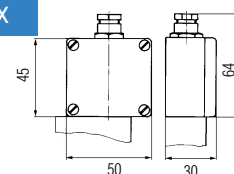


## Dimensions (in mm)

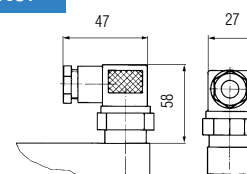


Housing: Brass or Stainless Steel  
Piston: Polysulfone\* or Stainless Steel (\* option Brass)  
Spring: Stainless Steel  
O-Ring: Viton®

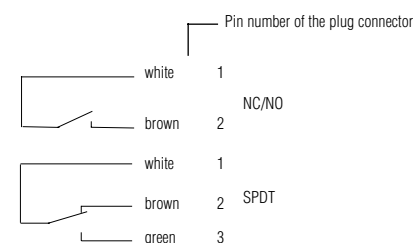
## Terminal Box



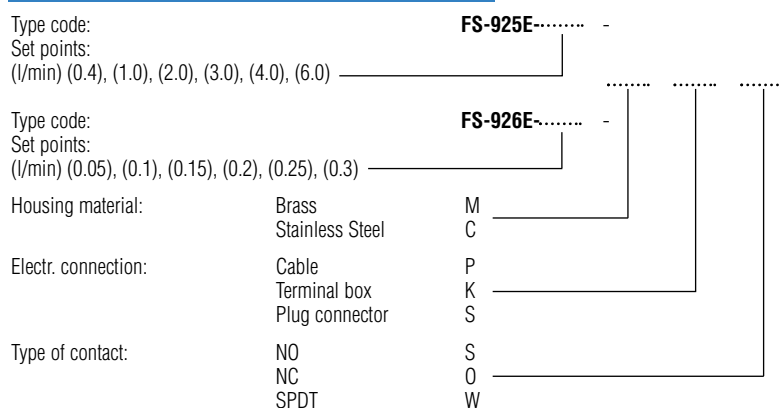
## Plug Connector



## Wiring Diagram



## How to Order for FS-925E / FS-926E



Note: For mineral oil applications please order brass piston instead of polysulfone piston, -GE169 to the number e.g. FS-925E-0.4-M-P-W-GE169

## Pressure Drop Diagram

(at min. set point adjustment)

